

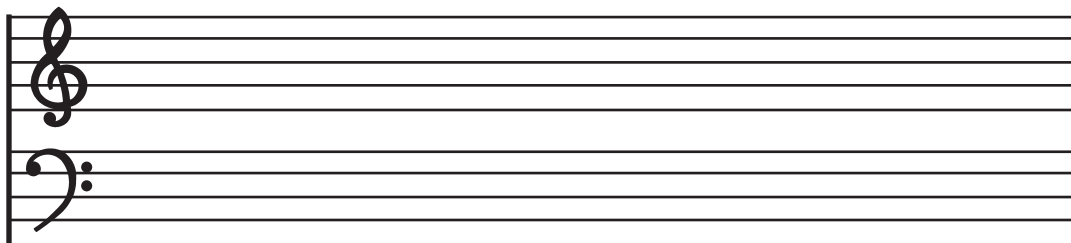


# Music Merit

1. On at least three different occasions sing as a soloist or a member of a group (such as a quartet or choir); or play a musical instrument as a soloist or member of a group (such as a band or orchestra).

Performance Chart	
Date	Occasion

2. Name each note on a scale and show where it should appear on the staff.  
Grand Staff



3. Draw the following music symbols and explain what each one means:

a. Treble Clef

means \_\_\_\_\_

b. Bass Clef

means \_\_\_\_\_

c. D.C. al Fine

means \_\_\_\_\_



Leader's Initials   
Date \_\_\_\_\_

Leader's Initials   
Date \_\_\_\_\_



d. Crescendo

means \_\_\_\_\_

e. Decrescendo

means \_\_\_\_\_

f. Fermata

means \_\_\_\_\_

g. Sharp

means \_\_\_\_\_

h. Flat

means \_\_\_\_\_

i. Natural

means \_\_\_\_\_

Leader's  
Initials

Date \_\_\_\_\_

4. Explain what level of volume is represented by the following terms, and draw their symbols:

a. Forte

means \_\_\_\_\_

b. Mezzo forte

means \_\_\_\_\_

c. Mezzo piano

means \_\_\_\_\_

d. Piano

means \_\_\_\_\_

5. Find an example of each of the following types of notes in your church hymnal:

a. Whole note

found in this song: \_\_\_\_\_

b. Half note

found in this song: \_\_\_\_\_

c. Quarter note

found in this song: \_\_\_\_\_

d. Eighth note

found in this song: \_\_\_\_\_

e. Sixteenth note

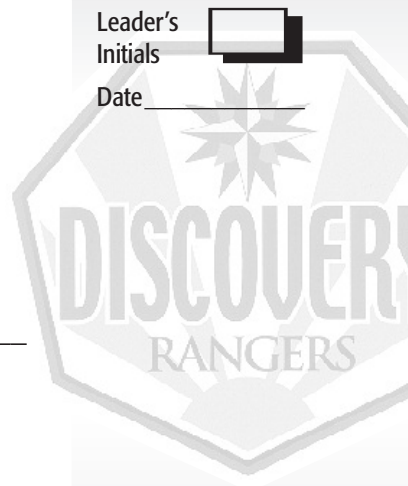
found in this song: \_\_\_\_\_

f. Dotted note (of any kind)

found in this song: \_\_\_\_\_

Leader's  
Initials

Date



Leader's  
Initials

Date

6. Identify ten musical instruments by sound.

I identified these instruments:

a. \_\_\_\_\_ f. \_\_\_\_\_

b. \_\_\_\_\_ g. \_\_\_\_\_

c. \_\_\_\_\_ h. \_\_\_\_\_

d. \_\_\_\_\_ i. \_\_\_\_\_

e. \_\_\_\_\_ j. \_\_\_\_\_

7. Demonstrate the appropriate way to direct an orchestra using appropriate conducting patterns.

8. Find three Scripture references regarding singing or musical instruments.

---

---

---

Leader's Initials   
Date \_\_\_\_\_

Leader's Initials   
Date \_\_\_\_\_

Leader's Initials   
Date \_\_\_\_\_

